

WISDOM COLLEGE

STRATEGIC PLAN 2022-2024



WISDOM
COLLEGE

CONTENTS

3

A Welcome
From Our
Board

7

Key
Priorities
1-2

4

A Welcome
From Our
Principal

8

Key
Priorities
3-4

5

Vision ,
Mission
& Values

9

Key
Priorities
5-6

6

Key
Priorities-
Summary



A WELCOME FROM OUR BOARD

Welcome to our Wisdom College Strategic Plan for 2022 – 2024.

Our Strategic Plan provides the direction to develop and deliver learning experiences that meet the educational needs of each student, to develop the attitudes, mindsets and skills for continual learning and professional growth throughout life.

We have worked in collaboration with all members of the College Board, staff, students, and key stakeholders to develop a road map, and we would like to share our journey into the future.

It is proven that communication and accountability are vital to a strong healthy relationship, and we well know, that with clearly set goals and realistic timelines, our priorities can be transformed into outcomes.

Success has never come by accident. We must prepare our children for a rapidly changing world. A world in which they must be agile and savvy in order to be successful. Success in their chosen career, further studies, family life, community and to make a contribution to wider society.

This Strategic Plan reflects the Wisdom College dedication to provide a multi-cultural, multi-faith approach to education that adheres to the core values of Hizmet. Ours is truly an exciting future and we are greatly honoured to play a role in the delivery of a world class educational experience for our children.



WELCOME FROM OUR PRINCIPAL - DR DAMIEN BARRY



I am delighted to share with you our new Strategic Plan that will support and further the vision and mission of this great College. A College that will become the template for a successful multi-cultural and multi-faith education.

There are a number of new initiatives that we will incorporate in this plan. This includes key teaching and learning platforms, new facilities, workforce planning initiatives and programs that will build a stronger sense of community. We will continue to take a holistic perspective to the education of our children and will provide a variety of pathways and opportunities.

Our committed and high-quality staff are passionate about building young people of character, resilience, and intelligence. Through their teaching and learning experiences, they motivate the students and aim to ignite their ambition, a passion for excellence, and a commitment to community. Being part of the community involves partnerships, both long and short-term. We are looking beyond our current successes to implement creative and new ideas that add value for our students, and ensure we forge meaningful relationships with local, national, and global communities. I am confident that this plan positions us well to provide generations of boys and girls with rich academic, co-curricular, pastoral, and social experiences. This strategic plan is not simply a plan for Wisdom College, it is inextricably linked to community, and as such we all have a vested interest in making it work. An exciting future awaits us. I am looking forward to the journey.

VISION, MISSION & CORE VALUES OF THE COLLEGE

VISION

To nurture socially responsible and confident students who become active global citizens.

MISSION

To develop students' ability to achieve both academic and moral excellence and to help them become critical thinkers and socially responsible.

CORE VALUES OF THE COLLEGE

We hold the following values as important to the operation of every aspect of the College:



KEY PRIORITIES- SUMMARY



KEY PRIORITIES

1-2

KEY PRIORITY 1 - OUR STUDENTS

We will provide our students with the skills and knowledge needed to thrive within a competitive and rapidly changing world.

KEY GOALS:

- Support the academic, social, and emotional wellbeing of all students
- Build the capacity within all students to become lifelong learners, and to possess high standards of conduct and presentation.
- Provide a range of co-curricular opportunities that provide sport, music, art and activities
- Establish a Service-Learning Program
- Establish a Student Leadership Program



KEY PRIORITY 2 - OUR PEOPLE

We will equip our staff with the support and resources needed to provide our students with the best possible education.

KEY GOALS:

- Develop supportive and collaborative professional relationships
- Establish a professional learning program that builds staff skills and capabilities
- Foster leadership capabilities and opportunities
- Establish a workforce plan
- Establish high expectations for performance, growth, and collegiality



KEY PRIORITIES

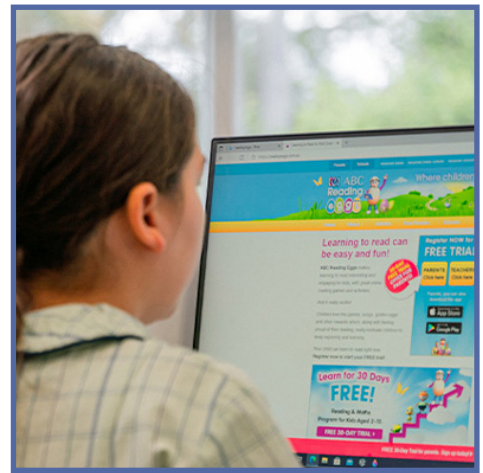
3-4

KEY PRIORITY 3 - OUR LEARNING

We will endeavour to deliver a vibrant and relevant teaching and learning environment that is responsive and contemporary.

KEY GOALS:

- Establish a clear teaching and learning framework
- Build a learning enrichment program that caters for all students across the learning continuum
- Develop and implement a comprehensive Prep -12 curriculum and assessment program
- Use data to inform teaching and learning
- Ensure that key platforms and frameworks are being used to support teaching and learning



KEY PRIORITY 4 - OUR COMMUNITY

We will encourage parents and community to engage with the learning of their children in order to establish strong partnerships between College, student and home.

KEY GOALS:

- Explore a before and after school care program
- Strengthen community partnerships, relationships, and networks
- Strengthen our Pastoral Care program
- Explore the feasibility of an Early Learning Centre
- Strengthen, build, and leverage our P & F



KEY PRIORITIES

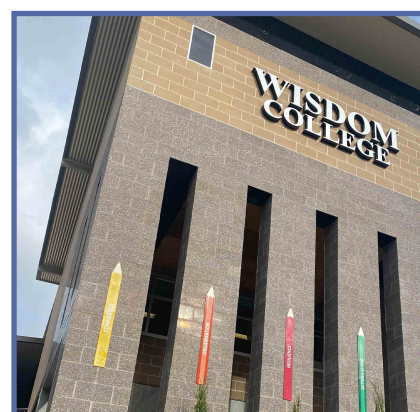
5-6

KEY PRIORITY 5 - OUR FACILITIES

We will provide facilities that allows us to deliver a world class teaching and learning environment for our staff and students.

KEY GOALS:

- Update and implement the College Master Plan
- Complete major building projects as part of previous Master Plan, including a focus on Secondary School improvements
- Provide additional seating, shade, and functional outdoor areas across the College
- Establish and implement an IT plan for the College
- Implement a tuckshop



KEY PRIORITY 6 - OUR GOVERNANCE & SUSTAINABILITY

We will maintain a financially stable and secure organisation that is fiscally responsible yet provides the resources and facilities to develop a world class education.

KEY GOALS:

- Maintain an economically viable and sustainable organisation
- Establish a proactive culture of risk management
- Ensure a robust and comprehensive governance framework
- Develop a marketing and enrolment plan to sustain enrolments and manage growth goals
- Manage growth prudently, but explore opportunities for expansion

